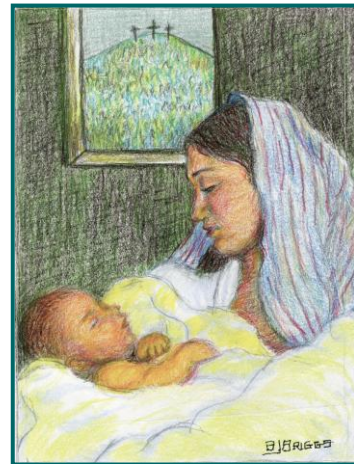


ORIGIN OF CHRISTMAS CARDS

Studies show that more than 95 percent of all Americans receive at least one Christmas card each year. The average is actually more than 70 cards per family. Millions of cards are mailed each holiday season throughout the world.

Have you ever wondered where this custom originated?

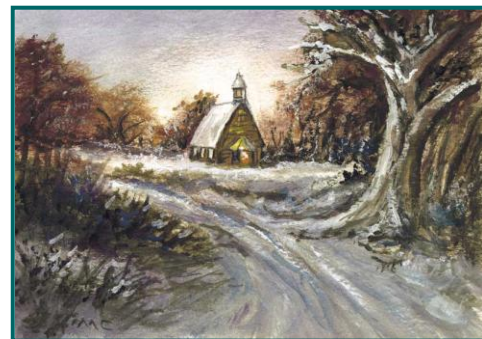
A museum director in the mid-19th Century named Sir Henry Cole in London liked to send yearly notes to his friends at Christmastime, just to wish them a joyful holiday season. One year, he found he had little time to write, yet he still wanted to send a message of good cheer.



He asked his friend, John Callcott Horsley, to design a card that he might sign and send. Those who received the cards loved the idea and created cards of their own.

And thus, the Christmas card was invented.

One of the holiday traditions in Life Care is the creation of Christmas cards by our residents. Activities directors of our centers lead contests in our art programs for creation of the best representations of the holiday, and award cash prizes for those finishing first, second and third in the competition. Each center then sends its first-place winning entry to corporate, where professional artists choose a winner for each of the seven operating divisions to be professionally printed for associates to select for their personal and professional mailing lists. Some remarkable talent is discovered through the process.



It is often the simple, heartfelt gestures in life that speak loudest of friendship. Ask yourself today: “What can I do to bring a smile to the face of a resident, a friend or even a stranger? What can I do to bring good cheer into the life of an individual who is needy, troubled, sick or sorrowing?”

(more)



Follow through on your inspiration, and remember, it's not a gift you are giving as much as a friendship you are building.

A friend loveth at all times (Proverbs 17:17).

– Beecher Hunter